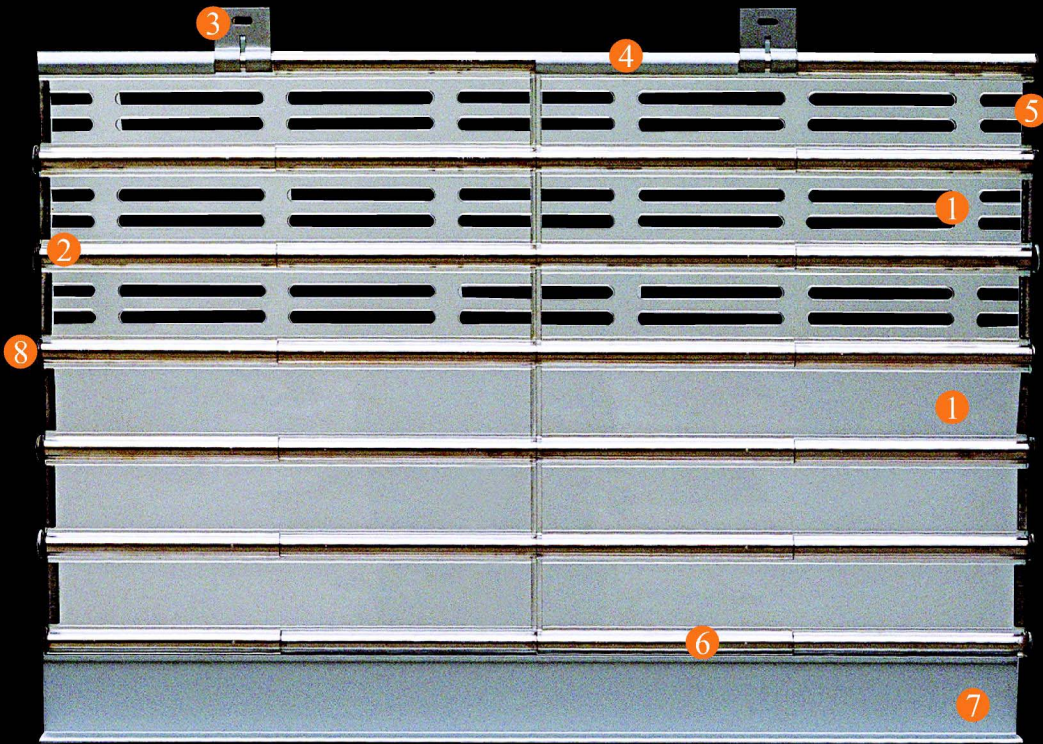


卷闸组件图

Components of Shutter Curtain

- ① 聚碳酸酯帘页
- ② 水平连接杆
- ③ 连接码
- ④ 顶部定位管
- ⑤ 左右限位码
- ⑥ 底部定位管
- ⑦ 头夹
- ⑧ 边 码
- ⑨ 边 槽



03



① Polycarbonate panel (Clearseal IIs)



① Polycarbonate panel (Clearseal II)



② Horizontal axis



③ Clip



④ Top spacer



⑤ End stopper



⑥ Bottom spacer



⑦ Bottom bar



⑧ End lock



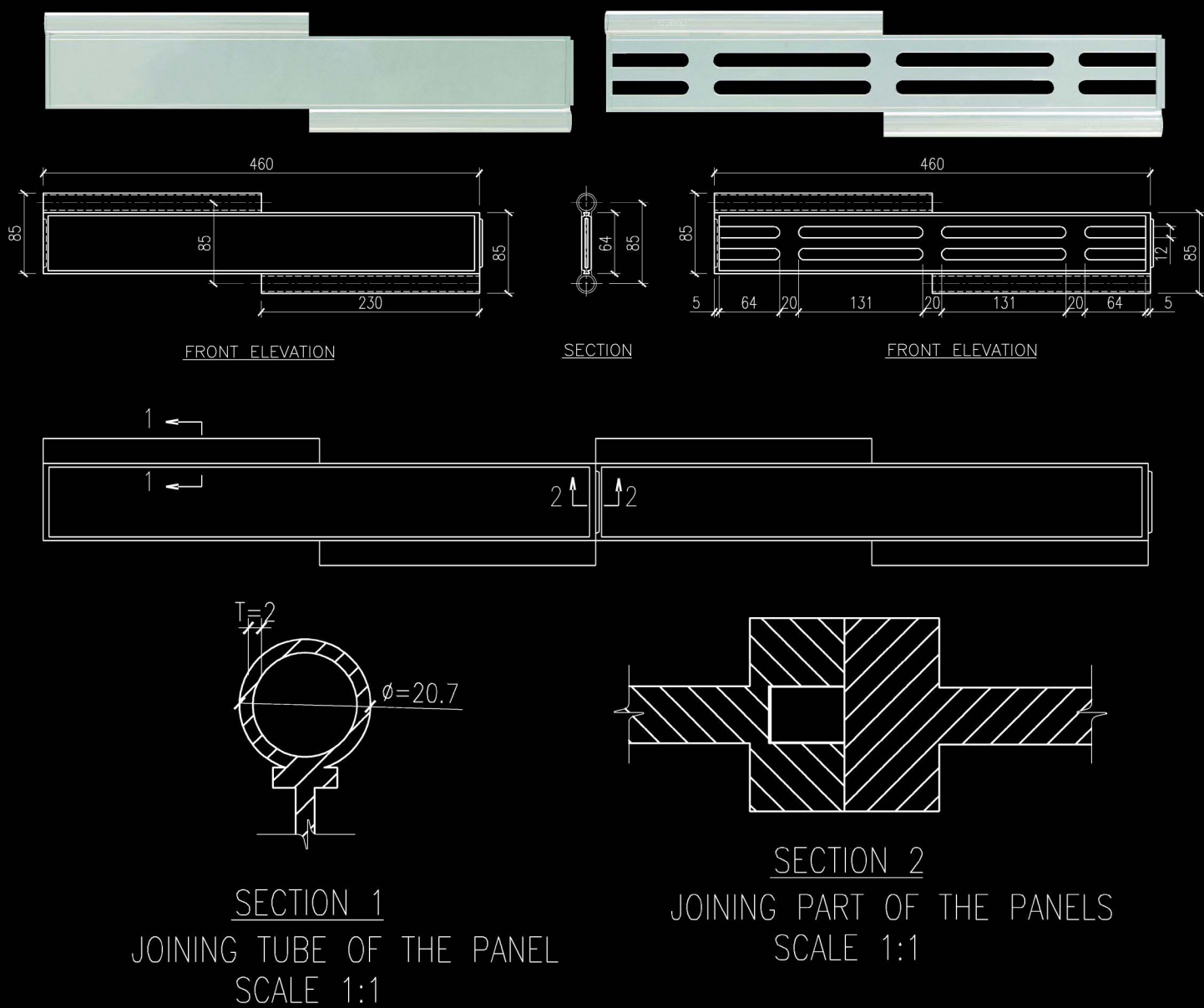
⑨ Guide rail

CLEARSEAL TRANSPARENT SHUTTER COMPONENT LIST

ITEM	1_Polycarbonate Panel	1_Polycarbonate Panel	2_Horizontal Axis	3_Clip	4_Top Spacer	5_End Stopper	6_Bottom Spacer	7_Bottom Bar
PORTRAIT								
CODE	PC_CS_SCM(II)	PC_CS_SCM(IIs)	PC_CS_TUB	PC_CS_ACF	PC_CS_AST	PC_CS_ELL	PC_CS_BBA	PC_CS_BTb
MATERIAL	Polycarbonate	Polycarbonate	Aluminium alloy tube/ Stainless steel tube	Aluminium alloy	Aluminium alloy	SUS 304	Polycarbonate	Aluminium alloy 6063-T5
DIMENSIONS	460 (w) x 85 (pitch) 3mm thick	460 (w) x 85 (pitch) 3mm thick	16mm outer diameter 1.2mm thick 6m long	50(w)x57.5(h)/mm	18.9mm outer diameter 180mm long	24.16mm(w) x 109.12mm(h) 10.98mm thick	20.7mm outer diameter 230mm long	80mm(h) x 6m long

ITEM	8_End Lock	8_Lock Cap	9_Guidrail	Connecting Slat	Motor Operator w/ Manua Chain system	Barrel	Switch Box	Remote Control
PORTRAIT								
CODE	PC_CS_ELR	PC_CS_EKB	PC_CS_GDL	PC_CS_GS75	Yuki Motor series	PC_CS_BLE	SUS SB	990
MATERIAL	SUS 304	Galvanised Mild Steel	SUS 304	Galvanised Mild Steel		Steel	SUS 304 COVER	PC Case
DIMENSIONS	23.9mm outer diameter 2.3mm thick	20mm outer diameter 13mm thick	50 x50x3000 mm high	72mm pitch	(F)UK250 (F)UK500 (F)UK700	6 metre long	150(h)x90(w)x66(d)	35x65

秀丽 II 型及秀丽 II s型聚碳酸酯帘页 CS II and CS II s Polycarbonate Panel



04

秀丽 II 型及秀丽 II s型透视帘页的特性:

- 抗 紫 外 光: 帘页采用美国通用电器 – 塑料(现称沙碧克塑料)243R聚碳酸酯原材料注塑成型, 透明度极高, 具抗紫外光功能, 帘页暴露在阳光下或温度高达摄氏60℃的聚焦射灯照射长达三年不会 变色, 透明度亦不减退。
- 晶 莹 透 透: 帘页以热流导系统注塑成型, 聚碳酸酯分子分布均匀, 表面平滑光洁, 晶莹通透, 有如高质素的水晶板。
- 特长的帘页组件: 每件帘页长度达462mm, 是同类制品的表表者。
- 减少尘埃积聚: 每件帘页组件两侧只有一支连接管, 组构成卷闸帘页之后, 帘页上的接缝相对减少, 不单外观 优美, 亦有效避免积聚尘埃。
- 高 刚 度: 帘页两侧各有一支长达230mm的连接管, 大大增加帘页抵抗撕裂力的面积, 提高了帘页承受撞击和风压的能力。
- 外 观 优 美: 帘页外侧连接管的外径只有20.7mm, 组构大跨度的卷闸和小跨度的卷闸同样适合。
- 保 护 膜: 每件帘页组件左右两面都贴有保护膜, 防止帘页在店铺装饰时受到污染。

- Speciality of Chung Tai Clearseal II & Clearseal IIs Transparent Roller Shutter:
- UV resistant: the shutter curtain is formed of SABIC 243R injection moulded polycarbonate panel which would not discolour even in strong sunlight and spotlight.
- Crystal Clear: made with runner manifold system, it gives unity in thickness and crystal-clear appearance.
- Extra long: each panel is up to 462mm wide which is remarkable among the category.
- Less dust problem: joining tube is made with outer part of the panel, our extra long joining tube makes a small amount of gaps hence could greatly reduce the dust problem.
- Extra strength: the extra long joining tube can resist high tensile and impact load.
- Elegant Appearance: the 20.7mm outer diameter of the joining tube makes it suitable and yet elegant for both large or small spans shutters.
- Well Protection: each panel is covered with protective layer during installation and decoration to ensure that no dust stick on it, the layer would be removed after the decoration has all been finished.